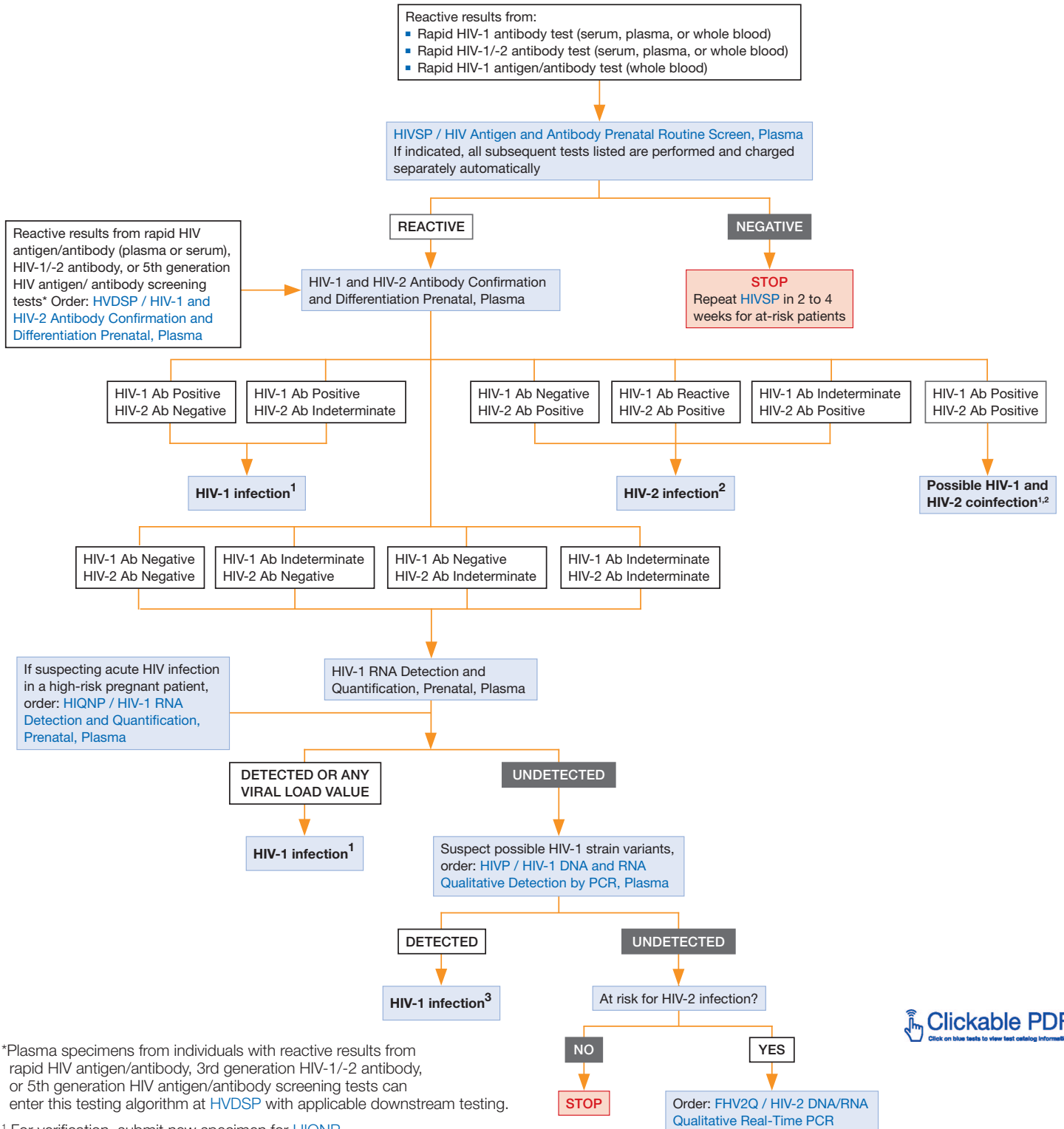


HIV Prenatal Testing Algorithm, Including Follow-up of Reactive Rapid Serologic Test Results



*Plasma specimens from individuals with reactive results from rapid HIV antigen/antibody, 3rd generation HIV-1/-2 antibody, or 5th generation HIV antigen/antibody screening tests can enter this testing algorithm at [HVDSP](#) with applicable downstream testing.

¹ For verification, submit new specimen for [HIQNP](#)

² For verification, submit new specimen for [FHV2Q](#)

³ Contact Mayo Clinic Laboratories for testing advice

Note: For diagnostic and screening for HIV-2 infection only, Testing see [HIV-2 Testing Algorithm: Screening \(Nonsymptomatic\) and Diagnostic \(Symptomatic\)](#)